

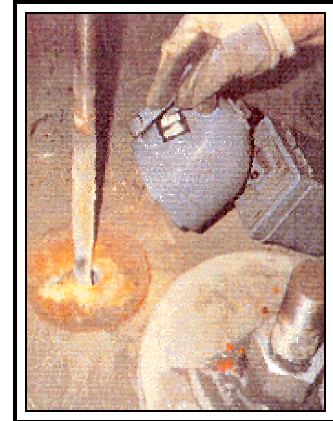
BOILER SLING ROD ANALYSIS



SLING ROD LOADS VARY – DO YOU KNOW THE LOADS ON YOUR SLING RODS?

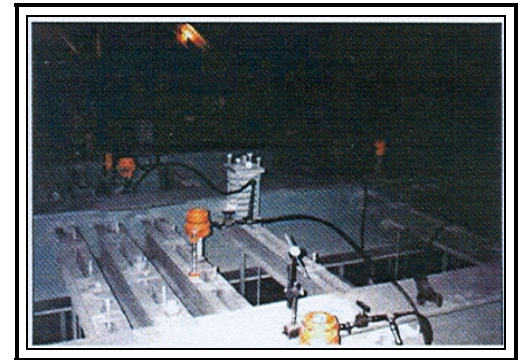
INCORRECTLY LOADED SLING RODS CAN CAUSE:

- Permanent Deformation
- Distortion and excessive stress concentrations
- Tube Weld Cracking
- Membrane Cracking
- Boiler Problems
- Shorten the life of the Boiler
- Catastrophic Failure



WHAT AFFECTS THE LOADS OF SLING RODS?

- High Temperature Creep
- Ash Overload
- Settlement of Structural Steelwork
- Change to Original Specification
- Poor Construction
- Incorrect Design
- Corrosion
- Erosion



INTEGRA'S SERVICES CAN BALANCE YOUR SLING RODS BY:



- Individual weighing of the hanger rods with the boiler in either a hot or cold condition.
- Record loads in both tabular and graphical form on a per rod basis.
- Visually inspect and report each hanger rod and supporting structure.
- Provide a detailed report based upon observations and results.
- Redistribute the hanger rods in complete rows.

INTEGRA's smallest tool has the capability to apply up to 87,000 lbs. faster, safer, and more accurately than any chain fall.

Using the multiple tool concept, INTEGRA can balance the largest boilers in the industry. An accurate and properly distributed load saves time and money.



Bolting and Machining the World's Critical Joints

1-800-779-2658

www.integratotechnologies.com