

# HYDRAULIC BOLT TORQUING



## VERSATILE AND SIMPLE TO USE

Applying a consistent, uniform amount of torque to the flanges is a critical part of any maintenance or construction project and INTEGRA has a wide assortment of torque wrenches for your next project.

## DIRECT FIT TORQUE WRENCHES

Designed to operate in low clearance and close radial fit applications with quick-change ratcheting heads.

### KEY FEATURES:

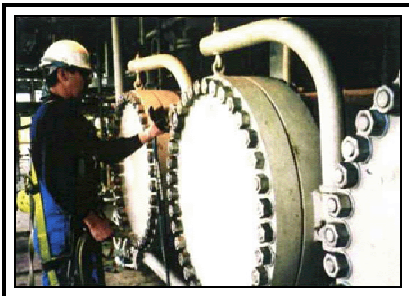
- Interchangeable Ratcheting Heads
- Tool Free Head Change
- Auto-Connect Drive Mechanism
- Fine Tool Ratchet Drive prevents dangerous Anti-Wind Up Devices.
- Extremely Tough and Durable Monocoque Design
- Simple Multi-Axis Hose Swivel
- Flat, Slimline Design for Low Headroom Applications
- Small Nose Thickness for Tight Radial Clearances



## SQUARE DRIVE TORQUE WRENCHES

### KEY FEATURES:

- Push Button Square Drive Release
- 360° Multi-Position Clip on Reaction Arm
- 360° Swivel Manifold prevents Hose Kinks and Jet Streams
- Fully enclosed Drive Mechanism prevents Pinch-Points/ Operator Injury
- Small Nose Thickness for Tight Radial Clearances



## ACCESSORIES

- Electric Power Consoles
- Air Power Consoles
- Sockets
- Twin Line
- Hose Reel and Stand

**SERVICE**

**RENTAL**

**SALES**

***Bolting and Machining the World's Critical Joints***

**1-800-779-2658**

**[www.integratesolutions.com](http://www.integratesolutions.com)**