

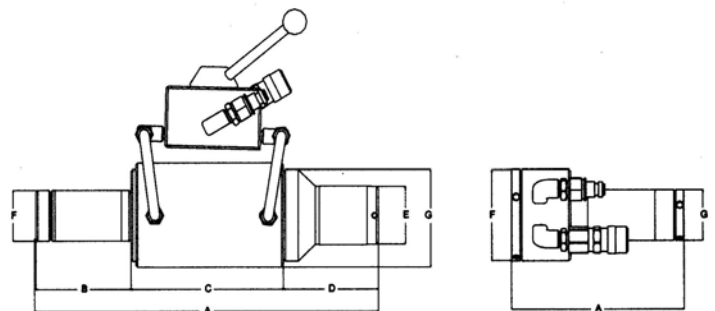
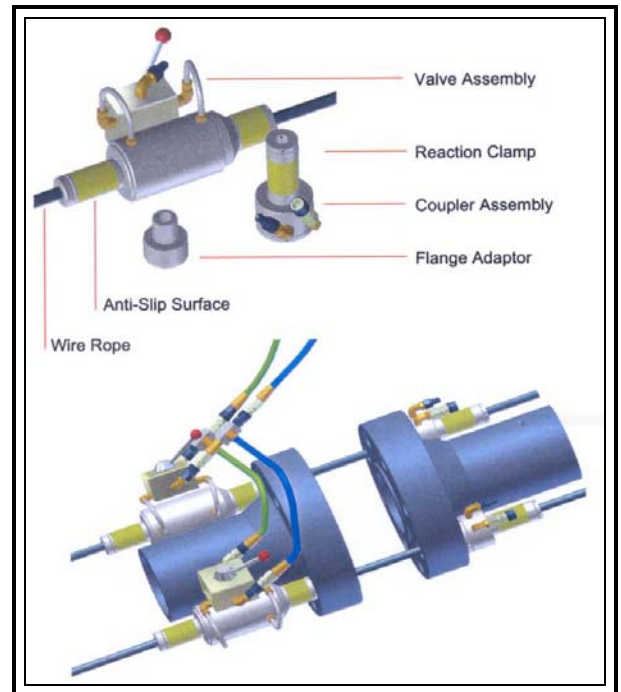
FLANGE PULLING SYSTEM



INTEGRA's SEASTallion™ Flange Pulling System is a fast, controllable tool for pulling and aligning flanges and heavy equipment. This System has been developed for use on subsea-flanged connections where speed, reliability and simple operation are essential.

FEATURES

- Lightweight and Easily Handled Design.
- Easy Connection of Flexible or Rigid Pipe Spools or Valve Assemblies
- Can be Configured to use Pullers singularly or in multiples.
- Bar Pulling System is available for applications with restricted access.
- 18 mm Dyeform Wire eliminates “Bird Nesting” of the Rope
- Hydraulically Operated Clamps allow rapid set-up and decommissioning.
- Maximum Capacity per Puller 249kN/25 Ton
- Maximum Operating Pressure 700 bar/ 10,000-psi



Max Load (Kn)	Max Load (Ton)	Model	Wire Dia	MWP (PSI)	Stroke		A (mm)	B (mm)	C (mm)	D (mm)	E (mm)	F (mm)	G (mm)	Weight (kg)
					(in)	(mm)								
248	25	Flange Puller	18mm	10,000	3	75	400	130	155	115	60	60	102	17
---	---	Reaction Clamp	18mm	10,000	---	---	185	---	---	---	---	92	60	5

SERVICE

RENTAL

SALES

Bolting and Machining the World's Critical Joints

1-800-779-2658

www.integratechnologies.com

FLANGE PULLING SYSTEM



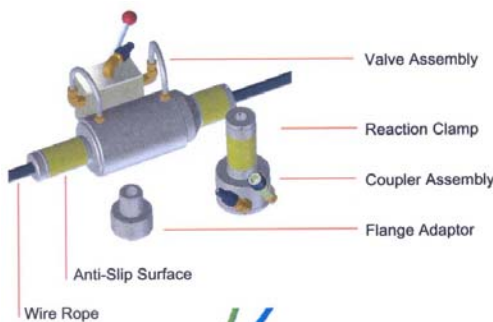
INFORMATION SHEET - SEASTALLION™ FLANGE PULLING SYSTEM

The SEASTallion™ Flange Pulling System has been developed for use on subsea-flanged connections where speed, reliability and simple operation are essential. They are hydraulically operated tools that are connected to a pump unit via a hydraulic harness assembly and downline.

The system is comprised of a hydraulic pulling unit, hydraulic reaction clamp and length of wire rope. The wire rope is placed through corresponding bolt holes on each of the flanges. The reaction clamp is then placed on the rope at the back of one of the flanges and acts as a reaction point for the system. The clamp 'grips' the rope via an integral hydraulically activated and de-activated collet system. The pulling unit is located at the opposite end of the wire rope (at the rear of the opposite flange). Collets located at the front and rear of the flange-pulling unit alternatively 'grip' the wire as the piston in the puller extends and retracts. As the piston extends, the rear collet grips the rope and the puller moves forward bringing the flanges together. The piston is then retracted and front collets grip the rope holding the puller in position. This operation is repeated until the flanges are brought together.

To bring the flanges together evenly and in alignment, 2 pullers and clamps are normally used. A valve on the puller allows each of them to be operated either in tandem or individually for accurate alignment. Once the flanges are brought together the clamps can be hydraulically de-activated and removed from the wire. This then allows the puller units and the wires to be removed and recovered to the surface.

SEASTALLION™ FLANGE PULLING SYSTEM



Flange Adapters

- Used to assist in the alignment of flanges during the pulling operation.
- Sizes available for all imperial and metric bolt holes.

Valve Assembly

- Valve design incorporates a center 'hold' position, allowing the downline to be disconnected and the puller units to stay in position. This will ensure there is no separation of the joint during period of weather downtime or bell changeovers.
- Valve design also permits the puller to be operated simultaneously or individually, allowing the diver to control the alignment of the flanges during the pulling operation.

Reaction Clamps

- Hydraulically activated and released reaction clamps eliminate collet lock-on and allow fast application and removal of the tool.

Anti-Slip Surface

- A renewable Anti-Slip grip surface improves the tool handling.

Wire Rope

- 18mm Dyeform wire is used. The structure of the wire eliminates the possibility of the strands failing under load, preventing 'bird nesting' from taking place.
- The wire is flexible over longer distances (2-3m) but becomes almost rigid over short lengths (around 12"). This aids in the alignment of flanges as they are drawn together.

SERVICE

RENTAL

SALES

Bolting and Machining the World's Critical Joints

1-800-779-2658

www.integratechnologies.com