

VELOCITY WASHER[®] IN 30 SECONDS

Save money and increase production by eliminating seized nuts

SPEED

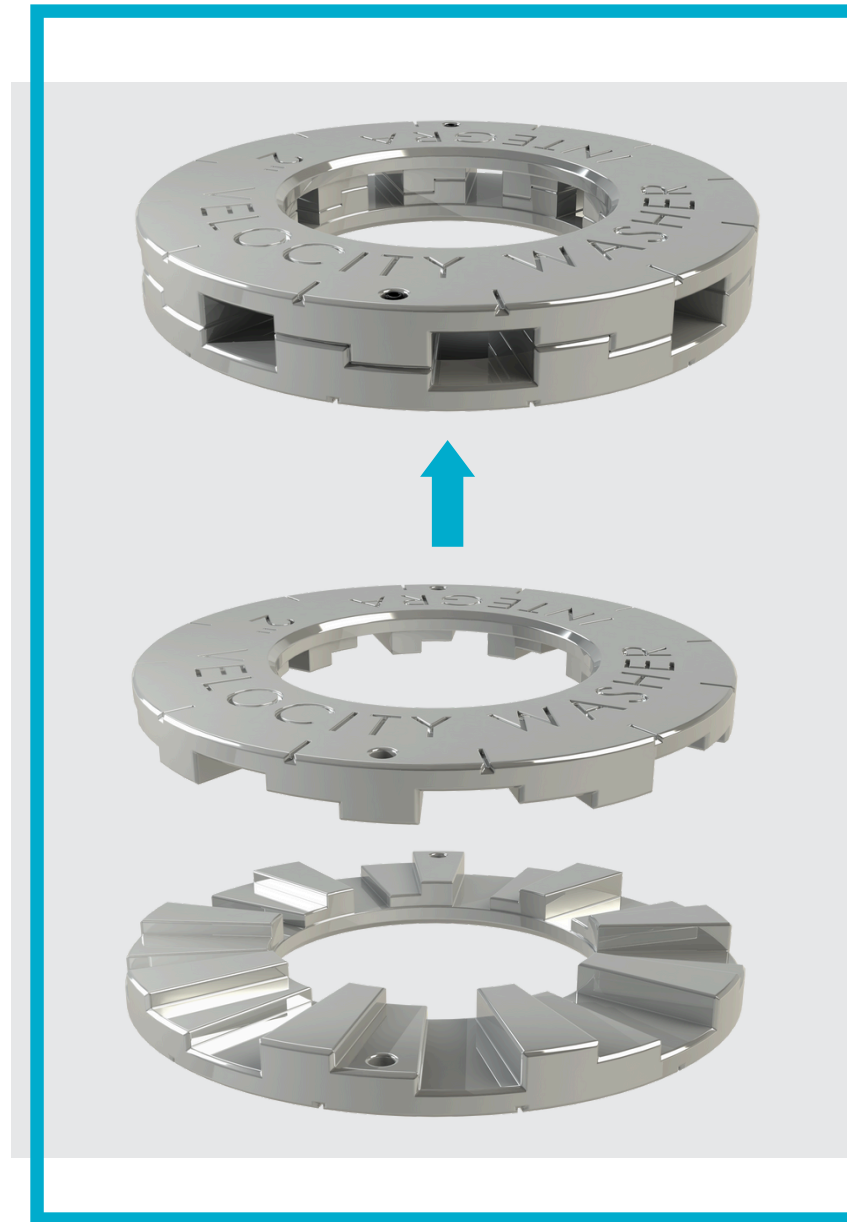
- 30X FASTER BREAKOUT
- INCREASE PRODUCTION
- LOWER LABOR COSTS

SAFETY

- NO HOT BOLTING
- NO TORCHING, MACHINING, AND NUT SPLITTING
- REDUCED TIME ON TOOLS

SIMPLICITY

- FITS ANYWHERE A HARDENED WASHER FITS
- NO SPECIAL TOOLS REQUIRED
- 32 LOCATIONS AND 100-MILLION+ HOURS IN-SERVICE



CONTACT US

800-779-2658

integrates.com

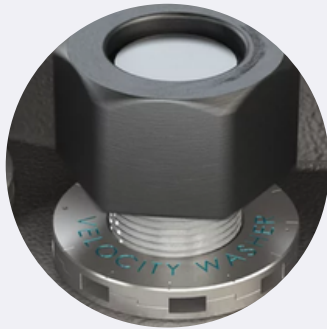
POWER TO THE FUTURE

velocitywasher.com

VELOCITY WASHER[®] : HOW IT WORKS

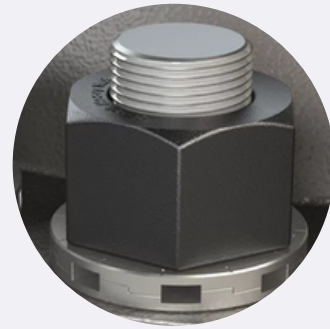
INSTALLATION

Place on Stud



To install, simply place the Velocity Washer on the stud. Due to its symmetric design, it can't be installed in the wrong orientation, delivering the simplest installation.

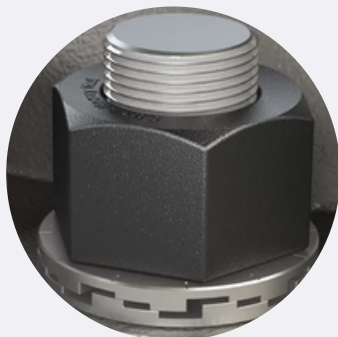
Torque the Nut



Torque the nut on using standard procedures: there are no special tools.

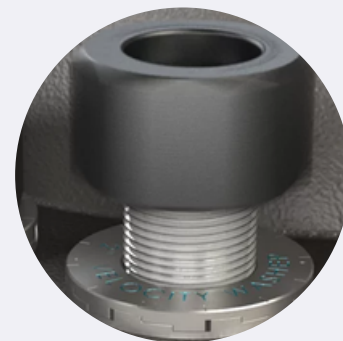
BREAKOUT

Turn the Nut



As always, turn the nut to the left. It will take less than one stroke of the torque wrench for the Velocity Washer to release all load.

Run the Nut Off



Once the Velocity Washer pops, all load will be removed, allowing the nut to be easily run off.